

Características

Renda Fixa CDI	44,06%
Renda Fixa Inflação	40,33%
Fundos de Participações	7,53%
Renda Variável	4,53%
Internacional Europa	1,48%
Fundo Imobiliário	1,12%
Internacional Global	0,76%
Empréstimos	0,18%



Política de Investimentos: Investe os recursos, principalmente, em cotas de fundos que atuam em diversos mercados, sem o compromisso de concentração em fator de risco específico.

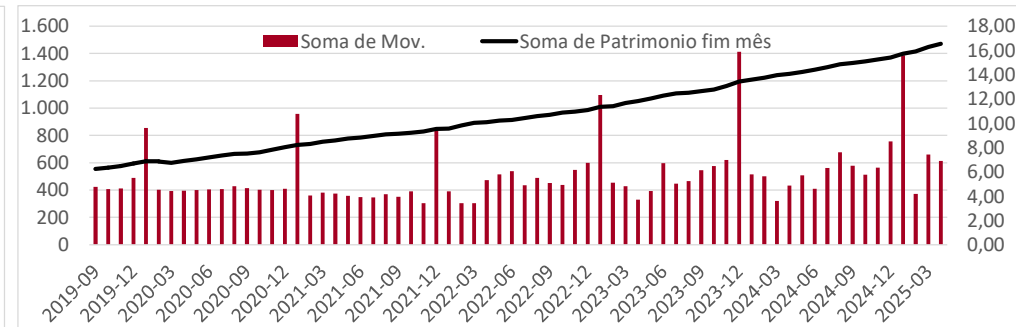
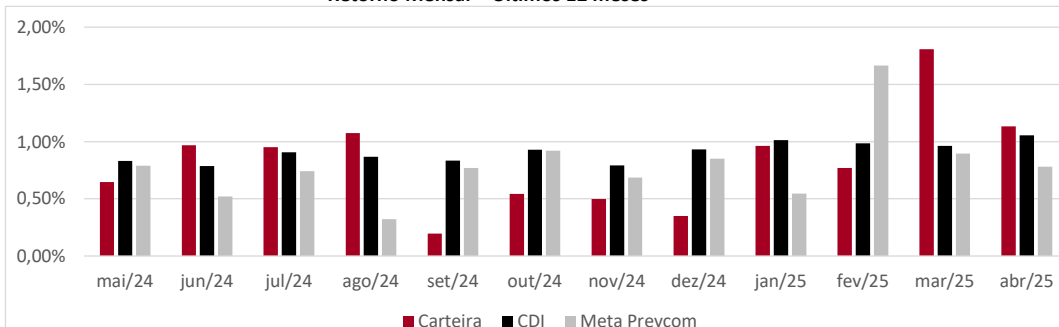
Meta Prevcom:
 IPCA+5% até 04/20
 IPCA+4% até 12/24
 IPCA+4,5% 2025

Retorno (%)	Ano	12 meses	24 meses
Carteira	4,76%	10,37%	22,79%
CDI	4,08%	11,46%	25,19%
IPCA	2,48%	5,53%	9,42%
Meta Prevcom	3,94%	9,90%	18,50%
IMA-B5	4,92%	9,37%	18,58%
Poupança	2,61%	7,41%	15,60%
IBOVESPA	12,29%	7,26%	29,34%
MSCI World	-9,87%	21,05%	45,92%
MSCI Europe	4,25%	21,25%	31,14%

* Cf. MP 567/12

Gráficos

Retorno Mensal - Últimos 12 meses



Retorno Mensal (%)	abr/25	mar/25	fev/25	jan/25	dez/24	nov/24	out/24	set/24	ago/24	jul/24	jun/24	mai/24
Carteira	1,14%	1,81%	0,77%	0,96%	0,35%	0,50%	0,54%	0,20%	1,07%	0,95%	0,97%	0,65%
CDI	1,06%	0,96%	0,99%	1,01%	0,93%	0,79%	0,93%	0,84%	0,87%	0,91%	0,79%	0,83%
IPCA	0,43%	0,56%	1,31%	0,16%	0,52%	0,39%	0,56%	0,44%	-0,02%	0,38%	0,21%	0,46%
Meta Prevcom	0,78%	0,89%	1,66%	0,55%	0,85%	0,69%	0,92%	0,77%	0,32%	0,74%	0,52%	0,79%
IMA-B5	1,76%	0,55%	0,65%	1,88%	-0,28%	0,36%	0,74%	0,40%	0,59%	0,91%	0,39%	1,05%
Poupança	0,67%	0,61%	0,63%	0,67%	0,58%	0,57%	0,60%	0,57%	0,57%	0,57%	0,54%	0,59%
IBOVESPA	3,69%	6,08%	-2,64%	4,86%	-4,28%	-3,12%	-1,60%	-3,08%	6,54%	3,02%	1,48%	-3,04%
MSCI World	-0,69%	-6,38%	-0,50%	-2,58%	-0,45%	9,45%	3,90%	-2,06%	2,40%	3,59%	8,10%	5,64%
MSCI Europe	2,34%	-2,47%	3,86%	0,58%	-0,25%	2,83%	-0,27%	-3,38%	3,61%	3,98%	3,53%	5,51%

Composição da Carteira

Retorno Nominal em % | Retorno Relativo ao índice de referência

Performance dos Fundos em Carteira			Mês		Ano		12 meses		Início do investimento		Volatilidade		Patrimônio R\$ milhões
Nome	Índice ref.	% PL	Início	Nominal	Relativo	Nominal	Relativo	Nominal	Relativo	Nominal	Relativo	Volatilidade	
Bela Cintra FI RF	Meta Prevcom	35,72%	13/nov/13	1,03%	0,25%	4,37%	0,43%	10,80%	0,90%	262,19%	40,03%	0,51%	R\$ 525,02
Itaú Institucional Optimus RF LP FICFI	CDI	6,34%	29/abr/22	0,71%	66,84%	2,89%	70,86%	12,06%	105,18%	41,73%	99,48%	0,82%	R\$ 93,26
Itaú Institucional RF Referenciado DI	CDI	5,40%	15/fev/24	1,06%	100,53%	4,14%	101,51%	11,62%	101,38%	14,18%	102,26%	0,08%	R\$ 79,35
Itaú Inst Global Dinâmico RF	CDI	4,62%	20/fev/20	1,13%	106,96%	3,84%	94,10%	11,49%	100,21%	58,96%	104,60%	0,55%	R\$ 67,93
BTGP Economia Real FIP Multi	IPCA+6,5%	3,91%	19/out/20	-0,17%	-1,10%	12,50%	7,93%	10,91%	-1,45%	134,39%	56,00%		R\$ 57,43
Itau Inst BOV11 FIC FIA	Ibovespa	3,59%	04/ago/23	3,73%	0,04%	12,60%	0,31%	8,14%	0,88%	14,31%	1,30%	14,97%	R\$ 52,70
Itaú Institucionais Legend RF LP Fc	CDI	3,50%	02/out/19	0,95%	90,28%	3,96%	97,18%	12,73%	111,06%	69,43%	117,27%	1,67%	R\$ 51,48
BNP Paribas Cred Inst FICFI RF CP LP	CDI	3,17%	11/out/23	1,08%	102,47%	4,29%	105,07%	11,94%	104,20%	19,41%	106,54%	0,10%	R\$ 46,64
Itaú Inst RF Inflação 5 FICFI	IMA-B5	2,84%	19/jun/19	1,74%	-0,02%	4,86%	-0,07%	9,17%	-0,20%	62,73%	-1,81%	2,28%	R\$ 41,79
Santander RF Ref DI Tit Público Hiper	CDI	2,32%	21/nov/24	1,04%	98,51%	4,10%	100,44%			5,27%	99,25%	0,09%	R\$ 34,08
BB RF Referenciado DI Tit Pub	CDI	2,31%	20/fev/25	1,04%	98,68%					2,30%	98,84%	0,08%	R\$ 34,02
XP Corporate Light FI RF CP LP	CDI	2,17%	24/jan/23	1,05%	99,25%	4,24%	103,94%	12,07%	105,26%	31,25%	106,58%	0,18%	R\$ 31,91
Itaú Soberano RF Simples LP FICFI	CDI	2,16%	02/set/19	1,04%	98,27%	4,05%	99,36%	11,35%	99,06%	58,98%	98,34%	0,08%	R\$ 31,73
Sul America Cred Institucional ESG FI R	CDI	2,03%	21/jun/23	1,08%	102,28%	4,51%	110,62%	12,72%	110,95%	27,92%	121,79%	0,27%	R\$ 29,81
Bradesco RF Referenciado DI Federal E	CDI	1,92%	12/ago/24	1,01%	96,09%	3,99%	97,79%			8,12%	97,23%	0,08%	R\$ 28,29
Porto Seguro RF DI CP	CDI	1,59%	18/jul/24	1,06%	100,19%	4,24%	104,00%			9,31%	102,60%	0,12%	R\$ 23,35
Sul América Excellence FI RF CP	CDI	1,52%	24/jan/23	1,05%	99,44%	4,22%	103,56%	12,10%	105,60%	32,07%	109,38%	0,14%	R\$ 22,28
Vot Allianzgi Euro Eq Growth FIM IE	MSCI Europe	1,48%	22/mai/19	1,56%	-0,78%	-4,97%	-9,23%	7,24%	-14,01%	91,75%	-6,15%	21,49%	R\$ 21,80
Bradesco Inst FIC FI RF IMA-B5	IMA-B5	1,35%	16/ago/23	1,74%	-0,03%	4,80%	-0,12%	9,01%	-0,36%	14,00%	-0,63%	2,30%	R\$ 19,85
BTG Pactual Inv de Impacto FIP Mult	IPCA+6,5%	1,19%	30/ago/21	-0,16%	-1,09%	20,76%	16,19%	16,63%	4,27%	47,62%	-8,25%	21,33%	R\$ 17,46
LFT	CDI	1,18%	05/dez/23	0,83%	78,81%	3,06%	75,01%	10,19%	88,91%	14,37%	88,33%		R\$ 17,37
BTG Pactual Economia Real II FIPM CLA	IPCA+8%	1,12%	04/mai/23	0,81%	-0,24%	19,32%	14,27%	31,70%	17,76%	-0,47%	-27,87%		R\$ 16,46
Inter Corporate RF Crédito Privado	CDI	1,01%	15/mai/24	1,07%	100,96%	4,12%	101,05%			11,18%	101,41%	0,09%	R\$ 14,85
BTG Pactual Créd Corp I FIQFI RF CP	CDI	0,92%	30/ago/21	1,21%	114,34%	4,70%	115,14%	12,62%	110,14%	57,30%	114,56%	0,22%	R\$ 13,52
MAG Renda Fixa FI	CDI	0,79%	13/set/23	1,06%	100,21%	4,28%	104,89%	11,55%	100,74%	19,66%	101,55%	0,16%	R\$ 11,59
Schroder Sustent Ações Globais IS IE	MSCI World	0,76%	24/mai/24	0,39%	1,08%	-11,96%	-2,09%			7,71%	-8,33%	21,24%	R\$ 11,24
BTG Pactual Explorer Inst FI RF LP	CDI	0,68%	13/mar/24	0,79%	74,80%	4,03%	98,84%	10,89%	95,02%	10,16%	78,42%	0,84%	R\$ 9,94
AZ Quest Small Mid Caps Inst. FICFIA	SMLL	0,59%	09/jun/20	7,93%	-0,54%	9,92%	-8,18%	9,99%	9,92%	24,22%	34,05%	10,19%	R\$ 8,65
Pátria Private Equity Fund VII Feeder Ir	IPCA+7%	0,51%	28/set/23	-0,28%	-1,25%	1,55%	-3,18%	17,06%	4,17%	17,01%	-3,79%		R\$ 7,57
Tivio Banks RF Crédito Privado FI	CDI	0,42%	10/nov/23	1,08%	102,42%	4,10%	100,52%	11,73%	102,34%	17,72%	103,48%	0,08%	R\$ 6,21
Spectra VI Institucional FIP Multiestrat	IPCA+8%	0,41%	31/mar/23	0,03%	2,87%	-0,86%	-17,04%	-4,72%	-33,87%	41,13%	141,65%		R\$ 6,10
Santander RF IMA-B5 Premium FICFI	IMA-B5	0,41%	18/dez/23	1,74%	-0,02%	4,85%	-0,07%	9,12%	-0,25%	11,60%	-0,36%	2,28%	R\$ 6,09
Rio Bravo Renda Varejo FII	IFIX	0,38%	20/dez/23	6,96%	3,96%	3,18%	-6,33%	-11,72%	-12,64%	-8,69%	-14,92%		R\$ 5,59
VBI Prime Properties FII	IFIX	0,37%	20/dez/23	2,79%	-0,22%	7,99%	-1,52%	-12,96%	-13,87%	-11,43%	-17,67%		R\$ 5,49
Fator Verita Multiestratégia Imobiliári	IFIX	0,37%	22/jul/24	3,45%	0,44%	10,93%	1,42%			-24,45%	-25,09%		R\$ 5,43
Vinci Selection Equities FIA	Ibovespa	0,35%	30/nov/22	5,21%	1,52%	11,54%	-0,75%	4,89%	-2,37%	11,75%	-8,33%	13,53%	R\$ 5,21
Perfin Voyager FIP Infra	IPCA+6%	0,26%	13/jun/24	0,23%	-0,67%	17,94%	13,52%			84,29%	73,84%	30,43%	R\$ 3,84
Carteira de Empréstimos	CDI	0,18%	05/dez/23	0,83%	78,81%	3,06%	75,01%	10,19%	88,91%	14,37%	88,33%		R\$ 2,62
Vinci Partners IV Feeder	IPCA+6%	0,10%	25/abr/24	-5,23%	-6,13%	-1,07%	-5,49%	-9,62%	-21,46%	-9,79%	-21,76%		R\$ 1,43
BTG Pactual Infraestrutura III FIP Multi	IPCA+8%	0,03%	02/jul/24	-5,28%	-6,33%	4,47%	-0,58%			-34,54%	-46,20%		R\$ 0,45

Patrimônio Total: R\$ 1.469,86